

EMPOWERING FUNDAMENTAL CARE EXCELLENCE

THE INTERNATIONAL LEARNING COLLABORATIVE (ILC) OXFORD 2024 STATEMENT - SUMMARY



ilccare.org



admin@ilccare.org

The ILC is a global organisation dedicated to transforming care by valuing and prioritising person-centred fundamental care. Its mission is to embed person-centred fundamental care into everyday practice, by reshaping care education, research, advocacy and relevant care-related policies.

Åsa Muntlin (1,2,3*), Eva Jangland (4), Clair Merriman (5), Birgitte Lerbæk (6), Alison Marchbank (7), Rebecca Feo (3,8), Tiffany Conroy (3,8), Alison Kitson (9,10,11), On behalf of the International Learning Collaborative (ILC) (2025) Empowering Fundamental Care Excellence – Summary Statement, ILC Inc, Adelaide, Australia

UNITE, CHANGE, LEAD

At the 2024 ILC international conference in Oxford UK, the ILC community endorsed three recommendations for the nursing profession and care teams across the globe to empower care excellence:

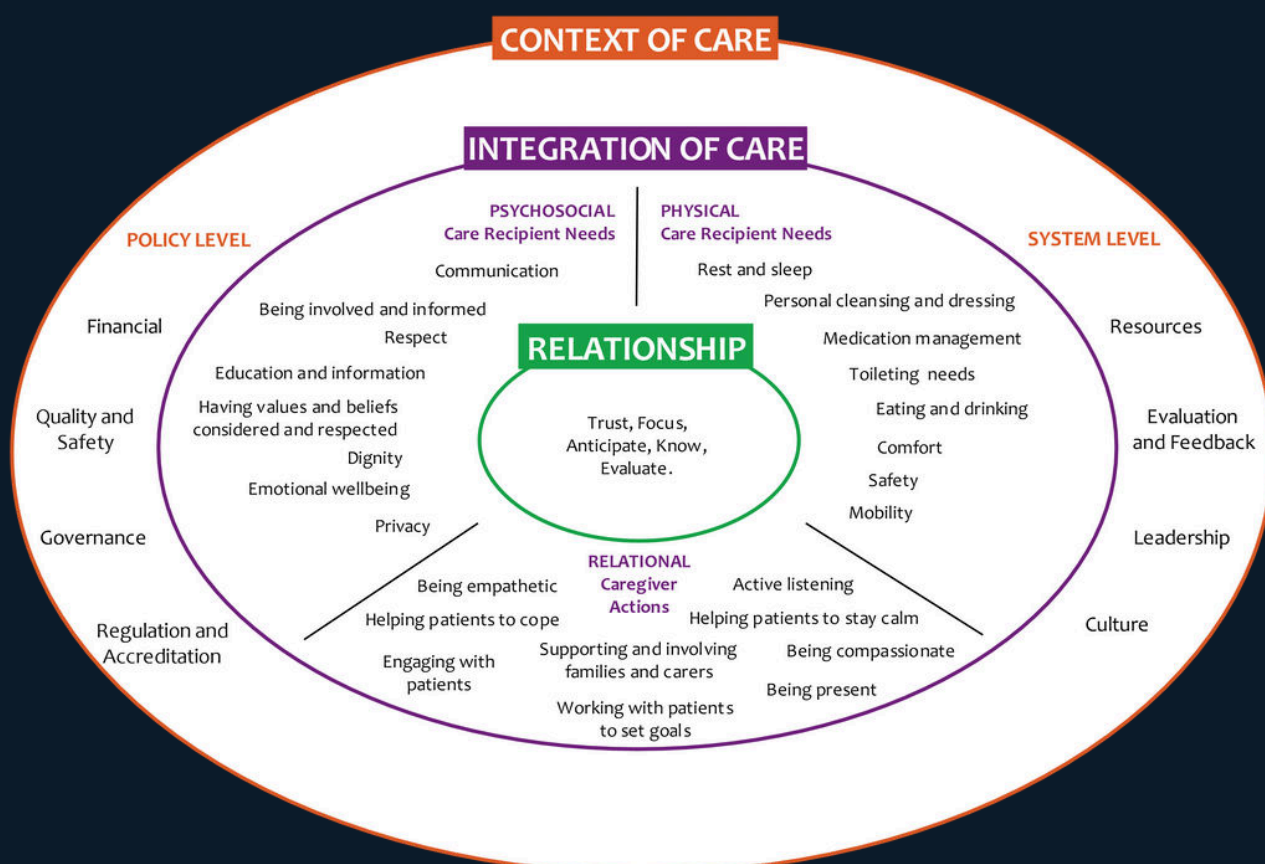
1. **Unite** – share experiences, shape common visions for fundamental care, and establish trusting collaborative work environments across all disciplines and with patients, carers and their care networks.
2. **Change** – initiate and continue systematic and structural change work to enhance proficiency for provision of fundamental care enabling and encouraging collaboration across disciplines, boundaries, organisations and systems.
3. **Lead** – educate, foster, advocate for the right environment, culture and resources, and mentor fundamental care leadership from the bedside to management and executive level that is inclusive, innovative and impactful.

The delivery of person-centred fundamental care should be the cornerstone in all healthcare systems. Meeting patients' fundamental care needs is essential for patients' safety and recovery, and positive experiences within a healthcare setting (1-3).



THE FUNDAMENTALS OF CARE FRAMEWORK

The internationally developed Fundamentals of Care (FoC) framework has evolved to guide the transformation of person-centred care led by nurses across the globe. The framework enables and empowers nurses and other healthcare leaders and practitioners to transform what they do into situation-based and person-centred fundamental care in their daily work (3-6).



The Fundamentals of Care Framework was created from the expertise and experience of world leading researchers and practitioners. Find out more about the Framework and see translations [here](#).

FUNDAMENTAL CARE - IT'S FAR FROM SIMPLE

The message from the 2024 ILC conference was clear: It is time to start celebrating the transformative power of skilled, knowledgeable nurses and care professionals to deliver person-centered fundamental care leading to better outcomes for patients and for staff. The conversation must shift from focusing on what nurses and care professionals lack, to showcasing their strengths — their expertise, their leadership, and their ability to drive safety, effectiveness, and quality in patient care.



Person-centered fundamental care is far from simple. It demands critical thinking, clinical judgment, and the competence to assess, intervene, and evaluate the impact of care. Reducing care to a checklist of basic tasks is not only misleading, but it also undermines the very essence of what makes care and nursing care so vital and complex. The focus of the recommendations is on the nursing profession and nurses at all levels, but particularly those at the bedside, engaging every day with people in need of care.

Nurses and allied health professionals are highly trained, and the care they provide requires expertise and constant reflection. Nurses, and their care colleagues are not just caregivers, they are leaders, innovators, and change agents as well. But they need to have a sense of greater empowerment to take charge in healthcare settings. This ILC Oxford Statement describes what empowerment activities look like and makes recommendations that can only be achieved through collaboration: unite, change, and lead.

To truly fulfil nursing's role in society in terms of delivering safe, person-centered fundamental care, we need a common language, a framework that articulates the unique contributions of nurses and other healthcare professions in fundamental care delivery. A shared language will unite professionals across disciplines, amplifying the value of nursing in ways that are measurable, actionable, and widely understood. The Fundamentals of Care framework can function as such and is the unifying force for empowerment in our health and care systems.

The recommendations will be used in disseminating the message that nursing and care leaders need to take the baton, unite like-minded people and then together we will make change happen. To make recommendations is never enough, they must be disseminated and used in discussions with/between patients, nurses, other clinicians, managers, organisations, educators, researchers, and other stakeholders. Recommendations need to be used, tested and evaluated using the most robust methods to provide a solid foundation of evidence, to evolve and improve care of patients and outcomes. With these recommendations we also want to acknowledge that nurses in clinical practice must be supported by their wider context, allied health care colleagues, and by health system leadership. It's not only their responsibility to create change.

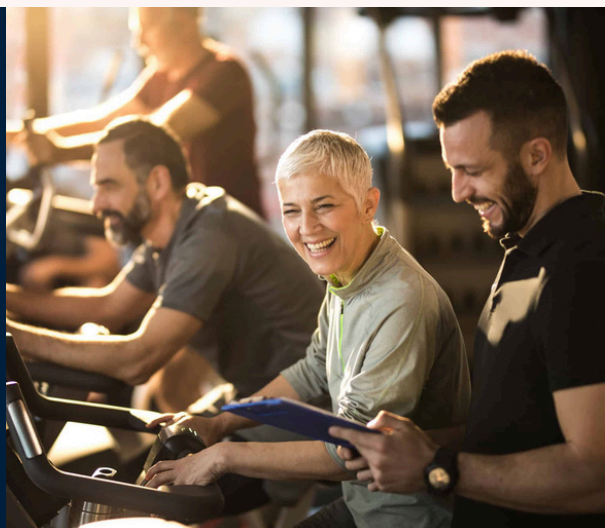
The Fundamentals of Care Framework is continuing to prove its transformative potential. Now, advancing to the next level of achieving critical mass — from bedside to management and executive leadership—we are ready to further catalyse a global movement, which means to unite, drive change, and lead efforts globally, for embedding and elevating fundamental care across healthcare practices worldwide. The take home message from the ILC conference was and is, do not give that power away. To empower fundamental care excellence globally, we as nurses and care professionals, can and should unite, make changes happen, and lead with confidence and courage.



WORK TOGETHER, SUPPORT ONE ANOTHER

In a time when healthcare demands are evolving fast, this is our collective mandate: to work together, support one another, and function as a single, unstoppable force for improvement. Lasting cultural and organizational change does not happen overnight, but with purposeful action and unwavering teamwork, we can create a nursing and care culture that is resilient, supportive, and capable of leading healthcare forward. Together, through a shared vision and commitment, we will redefine the future of nursing and health care, transforming fundamental care into a standard of excellence that is safe, effective, and empowered by the strength of a unified nursing profession collaborating with their medical and allied care colleagues.

Nurses and healthcare professionals globally need to become more confident and intentional for embedding person-centred fundamental care in their practice. Qualities of strength and confidence are essential for advancing healthcare quality and patient outcomes. By creating collaborative work environments and fostering leadership skills, nurses and care professionals will be empowered to work to their full scope of practice and demonstrate proficiency to drive meaningful changes. A united nursing and healthcare professional community, with a shared vision, amplifies the professions' voices for fundamental care, ensuring that nurses, in particular, lead initiatives that directly benefit patient care and promote effective interprofessional practice. Nursing practice will be elevated, but there will be a flow-on effect within organisations and healthcare systems to advance equity by positioning nurses at the forefront in leading the provision of excellent fundamental care.



ILC: THE GLOBAL VOICE FOR FUNDAMENTAL CARE.

REFERENCES

1. Feo R, Kitson A. Promoting patient-centred fundamental care in acute healthcare systems. *International journal of nursing studies*. 2016;57:1-11.
2. Feo R, Conroy T, Marshall RJ, Rasmussen P, Wiechula R, Kitson AL. Using holistic interpretive synthesis to create practice-relevant guidance for person-centred fundamental care delivered by nurses. *Nursing inquiry*. 2017;24(2):np-n/a.
3. Kitson AL. The Fundamentals of Care Framework as a Point-of-Care Nursing Theory. *Nursing research (New York)*. 2018;67(2):99-107.
4. Kitson, A., Conroy, T., Kuluski, K., Locock, L., & Lyons, R. (2013). Reclaiming and Redefining the Fundamentals of Care: Nursing's Response to Meeting Patients' Basic Human Needs. School of Nursing, The University of Adelaide, Adelaide, South Australia. Available from: https://digital.library.adelaide.edu.au/dspace/bitstream/2440/75843/1/hdl_75843.pdf
5. Feo, R., Conroy, T., Jangland, E., Muntlin Athlin, Å., Brovall, M., Parr, J., Blomberg, K., & Kitson, A. (2017). Towards a standardised definition for fundamental care: A modified Delphi study. *Journal of Clinical Nursing*, 27, 2285-2299. doi: 10.1111/jocn.14247
6. Muntlin Å, Jangland E, Laugesen B, Voldbjerg SL, Gunningberg L, Greenway K, Merriman C, Grønkjær M, Heinen M, Huisman-de Waal G.. *Int J Nurs Stud*. 2023 Sep;145:104526. doi: 10.1016/j.ijnurstu.2023.104526.

AFFILIATIONS

1. Area 3, Uppsala University Hospital, Uppsala, Sweden
2. Department of Medical Sciences/Clinical Epidemiology, Uppsala University, Uppsala, Sweden
3. College of Nursing and Health Sciences, Flinders University, Adelaide, South Australia, Australia.
4. Department of Surgical Sciences, Nursing Research, Uppsala University, Uppsala, Sweden.
5. Oxford University Hospitals Foundation Trust, Headington, Oxford, England and Oxford Institute of Nursing, Midwifery and Allied Health Research, Oxford Brookes University, Oxford, England.
6. Unit for Psychiatric Research, Psychiatry – Aalborg University Hospital, Aalborg, Denmark
7. Faculty of Health and Life Sciences, School of Allied Health Professions and Nursing, Nursing directorate, University of Liverpool, Liverpool, England.
8. Caring Futures Institute, Flinders University Adelaide, South Australia
9. School of Nursing, University College Dublin, Ireland
10. Department of Clinical Medicine, Aalborg University, Aalborg, Denmark
11. School of Public Health and Social Work, Faculty of Health, Queensland University of Technology, Brisbane, Queensland, Australia

ILC FOUNDING PARTNERS



Email Address

admin@ilccare.org



Website

ilccare.org



INTERNATIONAL
LEARNING
COLLABORATIVE